

Westlock County 2018 Road Study

Issued for Use

October 2018

Prepared for:

Westlock County
10336 – 106 Street
Westlock, Alberta T7P 2G1



Prepared by:

Stantec Consulting Ltd.
1100 – 4900 50 Street
Red Deer, Alberta T4N 1X7



Executive Summary

Stantec Consulting Ltd. was retained by Westlock County to complete the 2018 Rural Road Study. This report is intended to be used as a planning tool for the County to determine annual road upgrade requirements and the associated costs. This report addresses three specific tasks:

1. Review all the County's key roads, rank all roads in the County to determine which roads require upgrades, and prioritize the road upgrades for the next five years;
2. Identify the projected road maintenance costs for the next ten years; and
3. Identify alternative road maintenance methods for gravel and paved roads.

When discussing road standards, it is first necessary to define the various types of roads and their functions. There are two ways to classify a road. The first is to determine the function of the road. The second is to use a design classification which includes a definition for road width, surface type, number of lanes, and design speed. Two operational road environments were defined, Rural and Urban. Within these environments, three functional road classifications were identified:

- Local roads which provide access to residences and fields;
- Collector roads which provide connectivity between major roads and local roads;
- Arterial roads which provide primary connectivity between highways and communities within the County.

There are approximately 2,305 kilometres of roads within the Westlock County boundary. Table 1-1: Roadway Summary by Classification shows a breakdown of the roads by classification and surface type. The roadway classifications are highlighted in Figure 4-2: Road Classification.

Table 1-1: Roadway Summary by Classification				
Road Classification	Gravel Surface (km)	Hard Surface (km) ^{1,2}	Total Length (km)	Roads Requiring Improvements in the Next 10 years (km)
Local	1,802.4	7.6	1810.1	45.6
Collector	316.1	10.5	326.6	44.3
Arterial	109.4	22.7	132.2	25.2
Urban Environment	17.6	19.1	36.6	13.4
Total	2,245.5	59.9	2,305.5	128.5

¹ Based on available data provided by the County and field inspections.

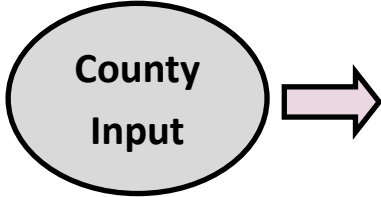
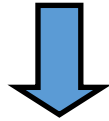
¹ Hard surface includes Oil Bound, Chip Seal, Cold Mix, and Asphalt Concrete Pavement.

² All roads in urban environment assumed to be hard surfaced based on data in the Westlock County GIS database. Urban environment is defined as roads within hamlets and multi-lot subdivisions.

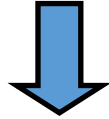
Stantec ranked each road in Westlock County based on a number of criteria including road classification, traffic volumes, and existing conditions. Using these criteria, each road was ranked in order to prioritize road construction, with lower ranked roads requiring upgrades before higher ranked roads. Each construction year has been assigned roadway sections based on priority ranking and segments that have been selected by the County. The annual road programs are shown in Figure 7-1: Road Construction.

A flow chart below outlines the procedure used to determine the proposed construction Program.

Project Initiation Meeting



Preliminary Data Collection and Existing Conditions Review



**Field Assessment
June 12—22, 2018**



Road Rehabilitation Ranking List

**Importance Rating
(1—5 Scale, 1 Poor, 5 Good)**

- Traffic Count
- % Trucks
- Proximity to Parallel Primary or Secondary Highway
- Continuity
- Industry and Commodity Mix

**Condition Rating
(1—5 Scale, 1 Poor, 5 Good)**

- Structure Condition
- Graveling Required
- Road Surface Drainage
- Road Width
- Vertical Alignment
- Horizontal Alignment
- Side Slope
- Ditch Drainage
- Brushing
- Safety Issues

Calculate the Average Importance Rating



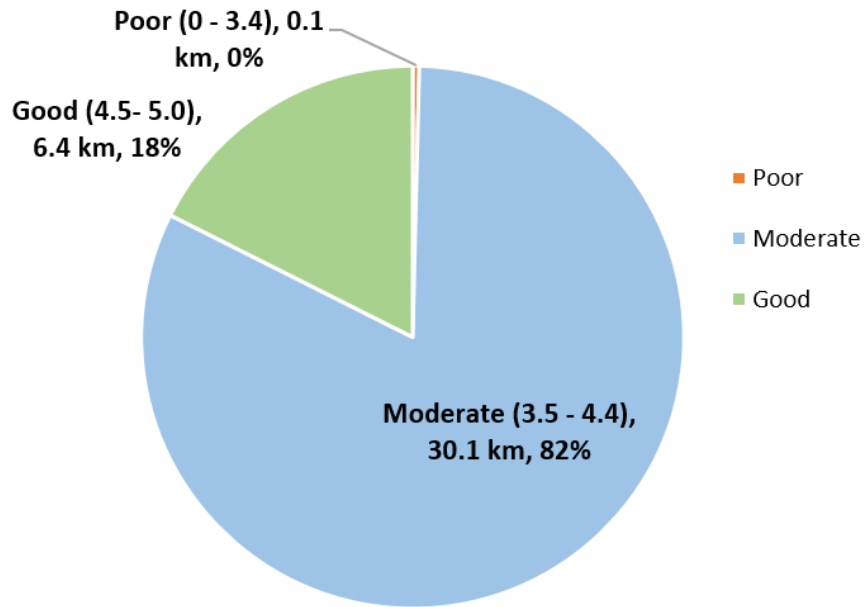
Calculate the Average Condition Rating

Road Rehabilitation Priority Ranking and Opinion of Probable Cost
Lower ranked roads requiring upgrades before higher ranked roads

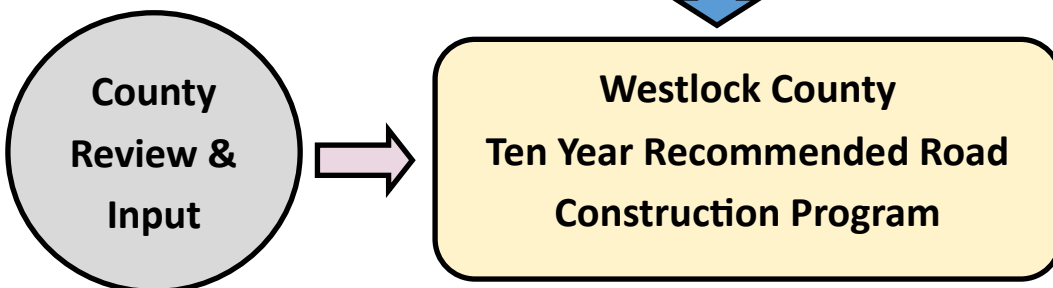
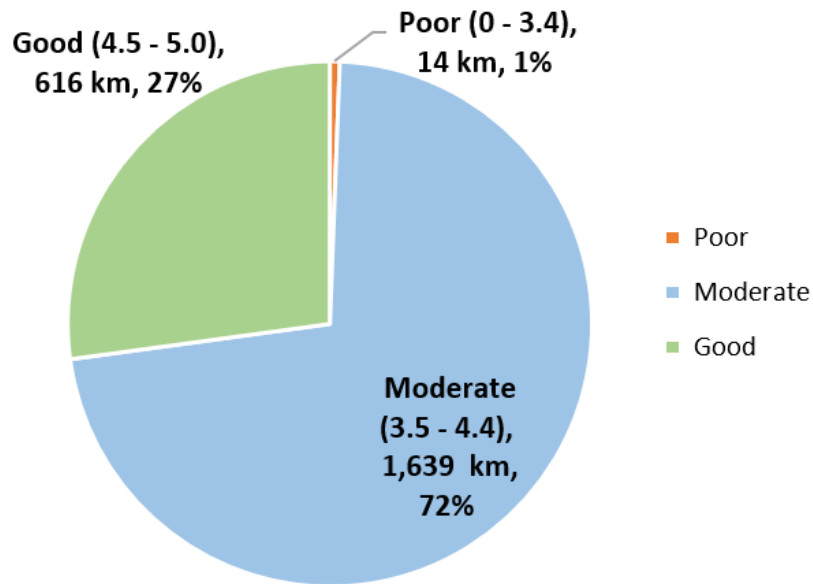
Condition Ranking Results and Review



Urban Road Condition Rating Summary



Rural Road Condition Rating Summary



WESTLOCK COUNTY 2018 RURAL ROAD STUDY

Roadway Construction Program
August 29, 2018

Figure 5-1 - Gravel Road in Poor Condition (1) – Rating 2.3



WESTLOCK COUNTY 2018 RURAL ROAD STUDY

Roadway Construction Program
August 29, 2018

Figure 5-2 - Gravel Road in Poor Condition (2) – Rating 3.0



WESTLOCK COUNTY 2018 RURAL ROAD STUDY

Roadway Construction Program
August 29, 2018

Figure 5-3 - Gravel Road in Moderate Condition (1) – Rating 3.7



WESTLOCK COUNTY 2018 RURAL ROAD STUDY

Roadway Construction Program
August 29, 2018

Figure 5-4 - Gravel Road in Moderate Condition (2) – Rating 3.8



WESTLOCK COUNTY 2018 RURAL ROAD STUDY

Roadway Construction Program
August 29, 2018

Figure 5-5 - Gravel Road in Moderate Condition (3) – Rating 4.0



WESTLOCK COUNTY 2018 RURAL ROAD STUDY

Roadway Construction Program
August 29, 2018

Figure 5-6 - Gravel Road in Moderate Condition (4) – Rating 4.3



WESTLOCK COUNTY 2018 RURAL ROAD STUDY

Roadway Construction Program
August 29, 2018

Figure 5-7 - Gravel Road in Good Condition (1) – Rating 4.6

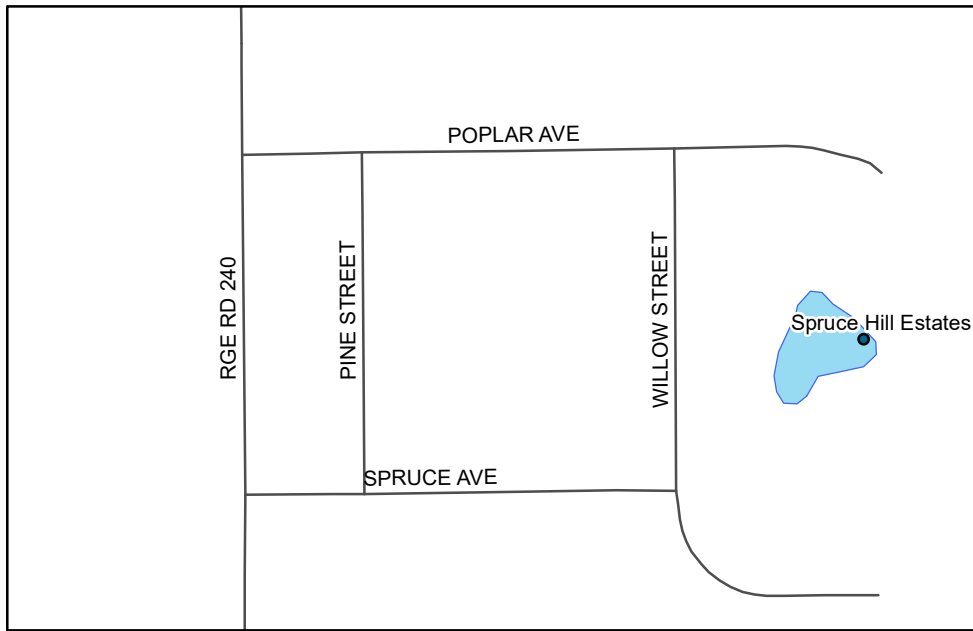
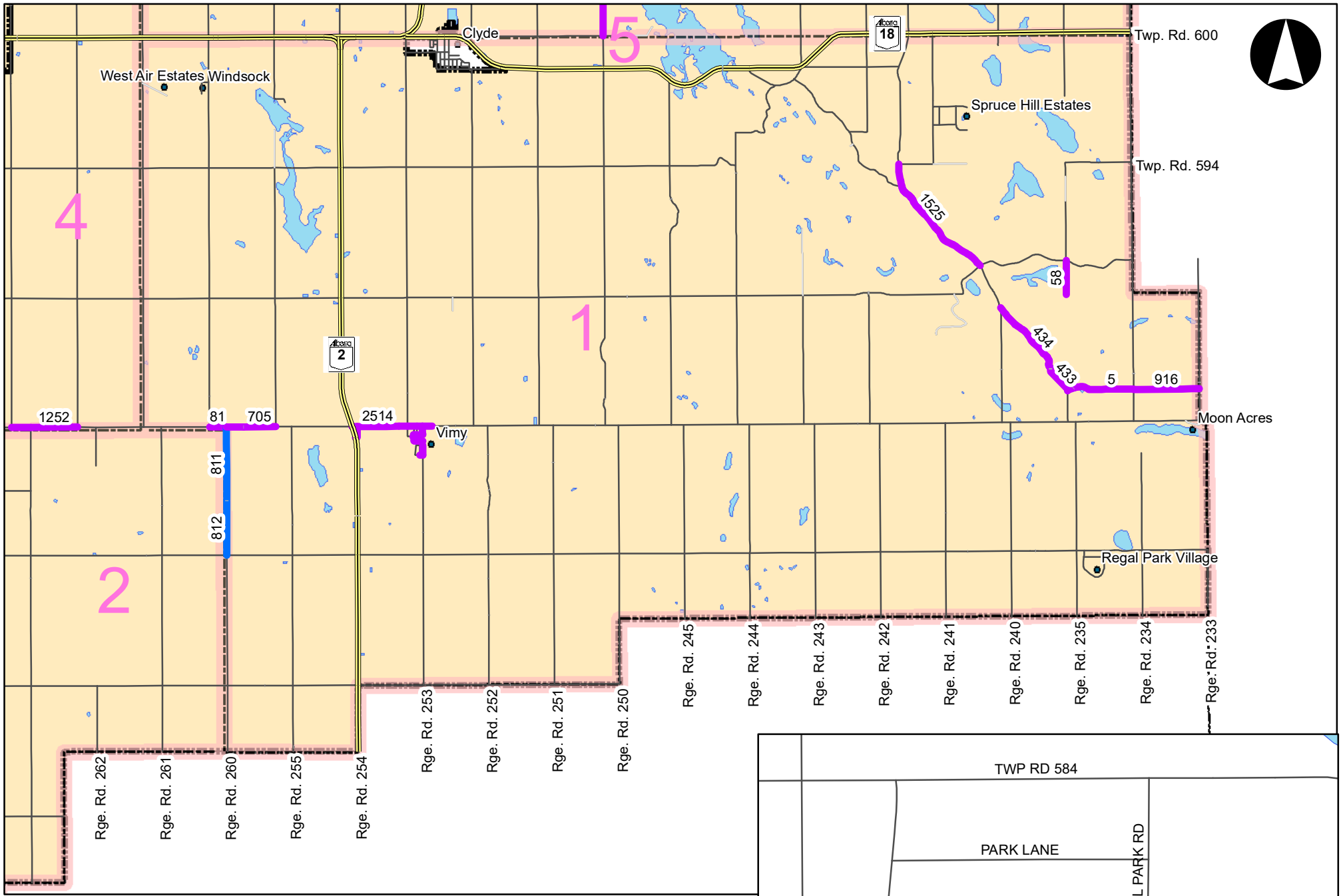


WESTLOCK COUNTY 2018 RURAL ROAD STUDY

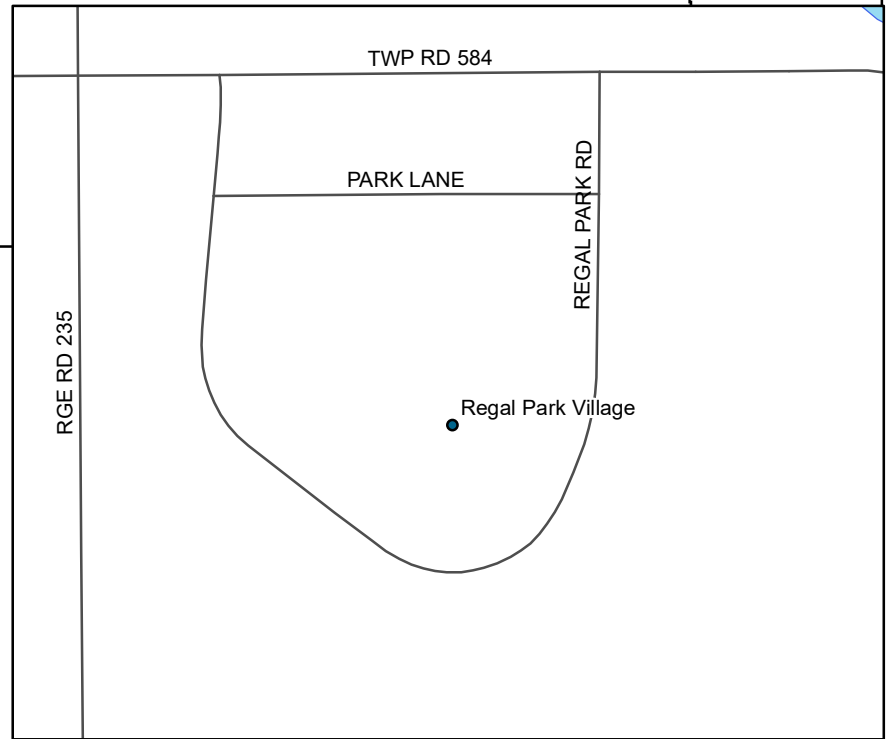
Roadway Construction Program
August 29, 2018

Figure 5-8 - Gravel Road in Good Condition (2) -Rating 4.8

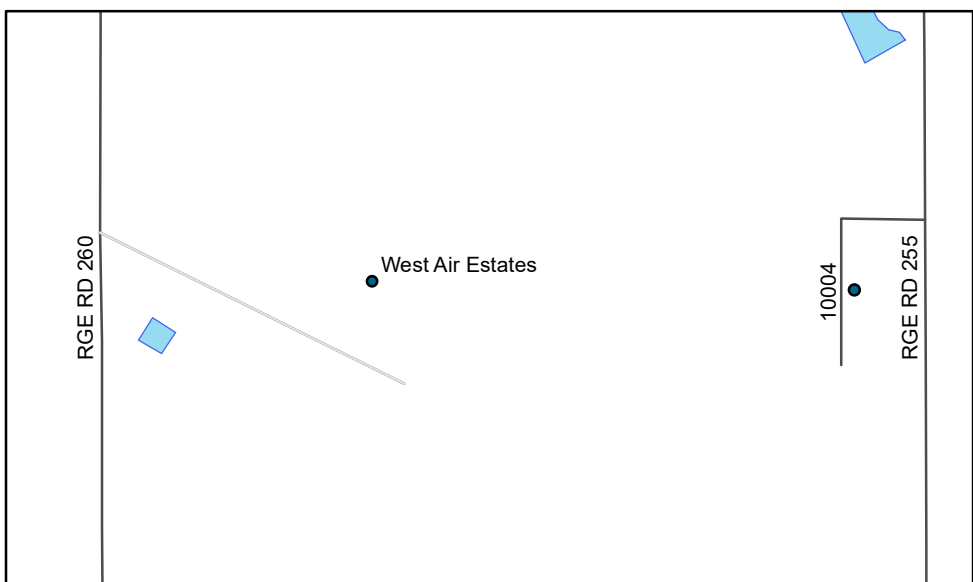




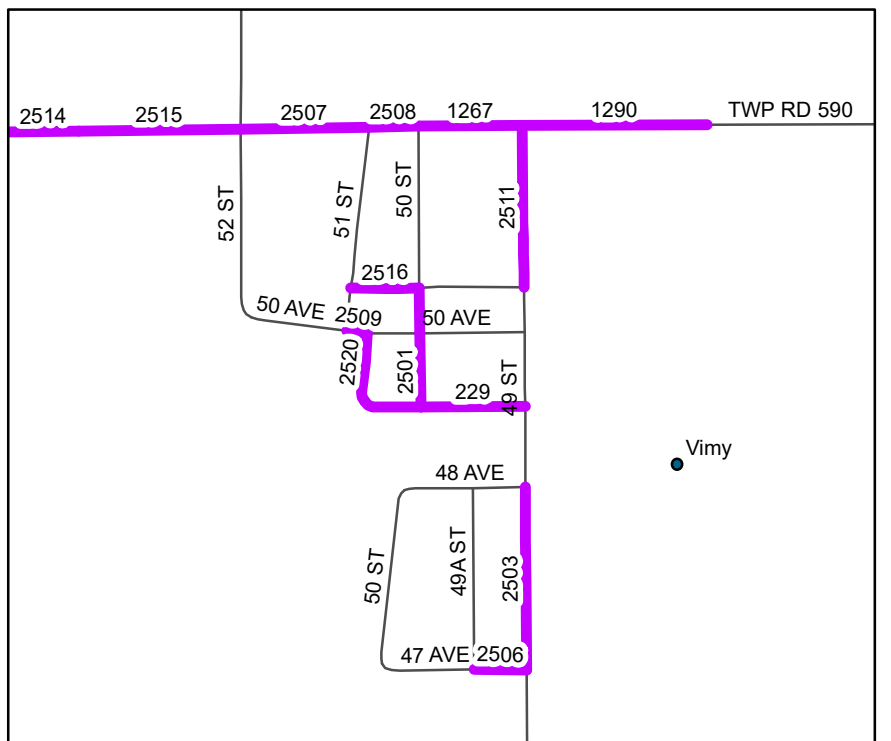
Spruce Hill Estates



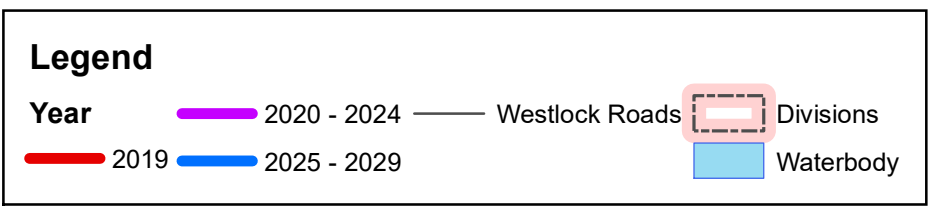
Regal Park Village



West Air Estates & Windsock

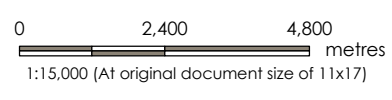


Vimy



Notes

1. Coordinate System: NAD83 Alberta 3TM ref merid 114 W
2. Base features produced under license with BING
3. Service Layer Credits:



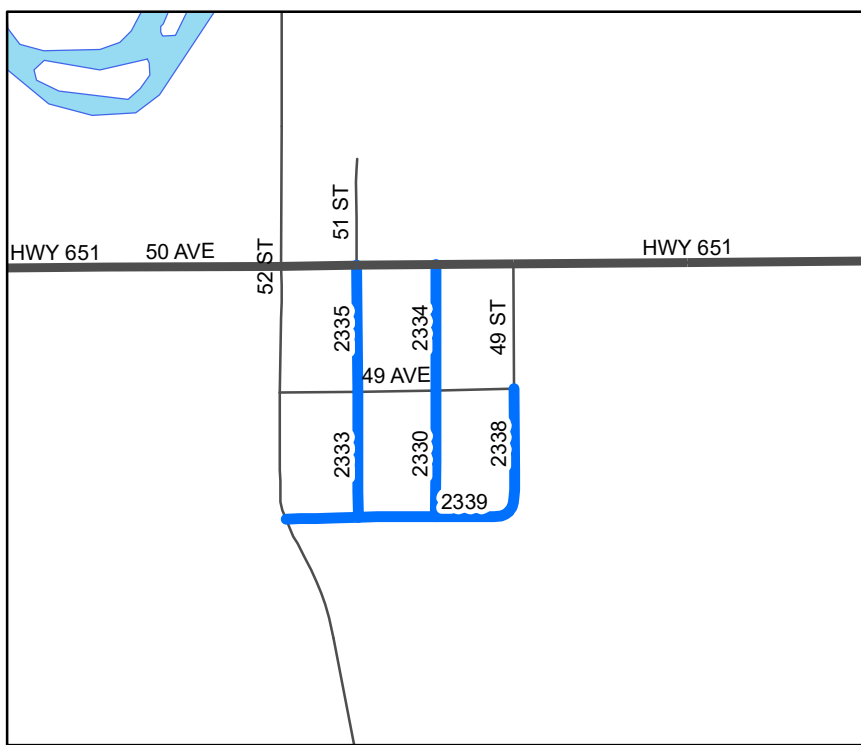
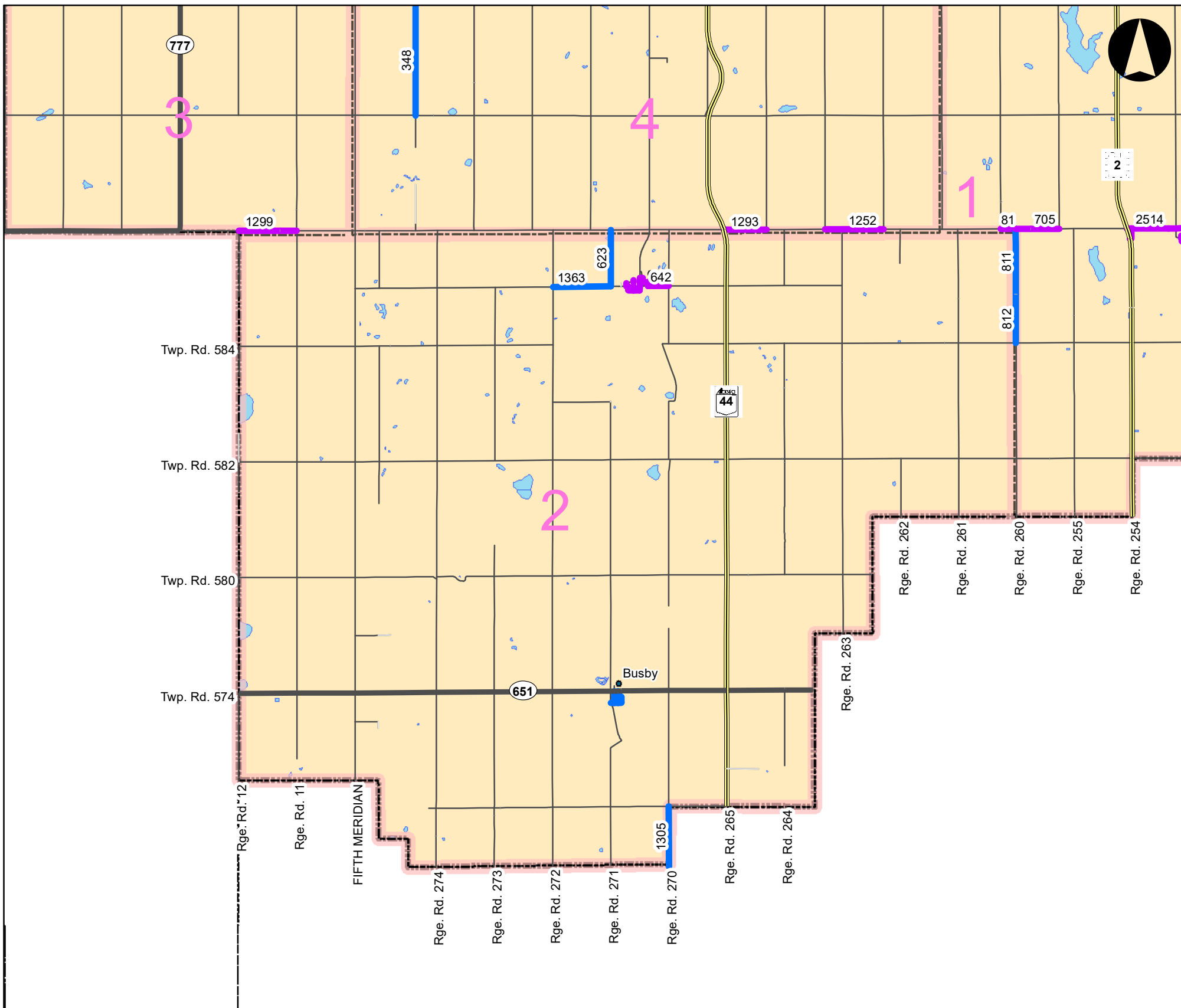
Project Location: 116239510 Westlock, AB Prepared by JA on 2018-07-20

Client/Project: Westlock County

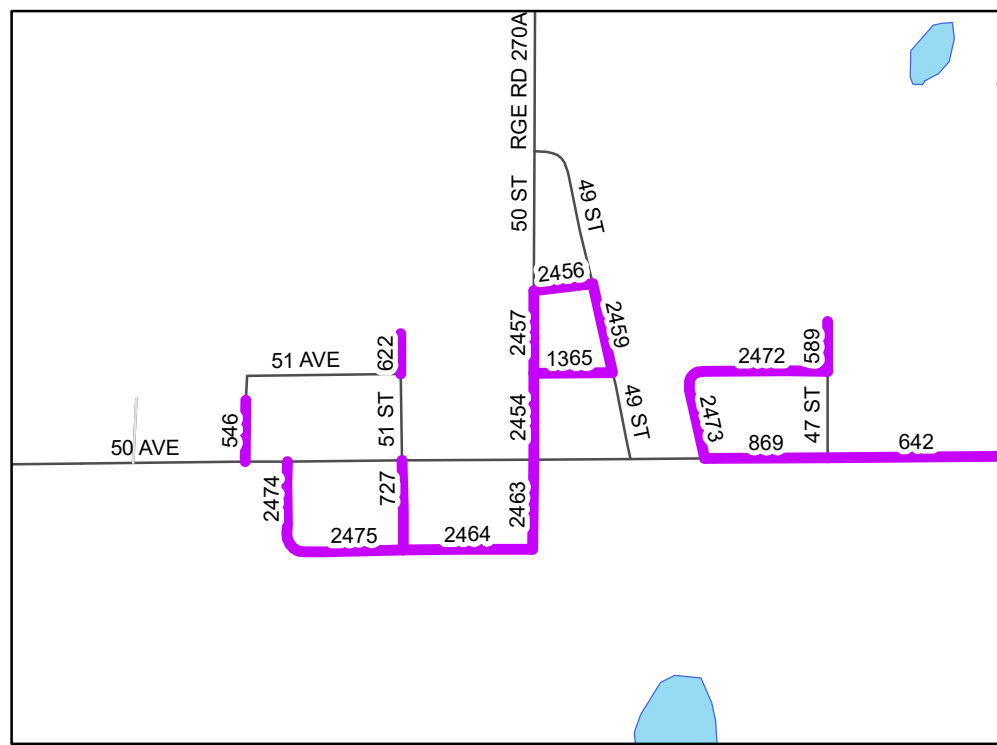
Figure No. 7.1.1

Title: Division 1: Road Construction

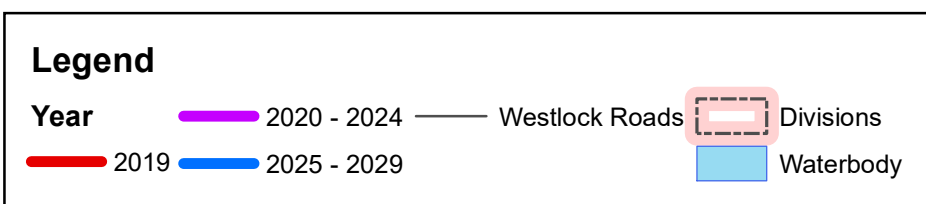
V:\116239510\050_dwg_e\inc_dsgn\01_arcview\MXD\Figure 7.1-1_westlock_road_study_181025.mxd Revise: 2018-10-25 By: jahn



Busby

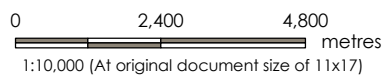


Pickardville



Notes

1. Coordinate System: NAD83 Alberta 3TM ref merid 114 W
2. Base features produced under license with BING
3. Service Layer Credits:

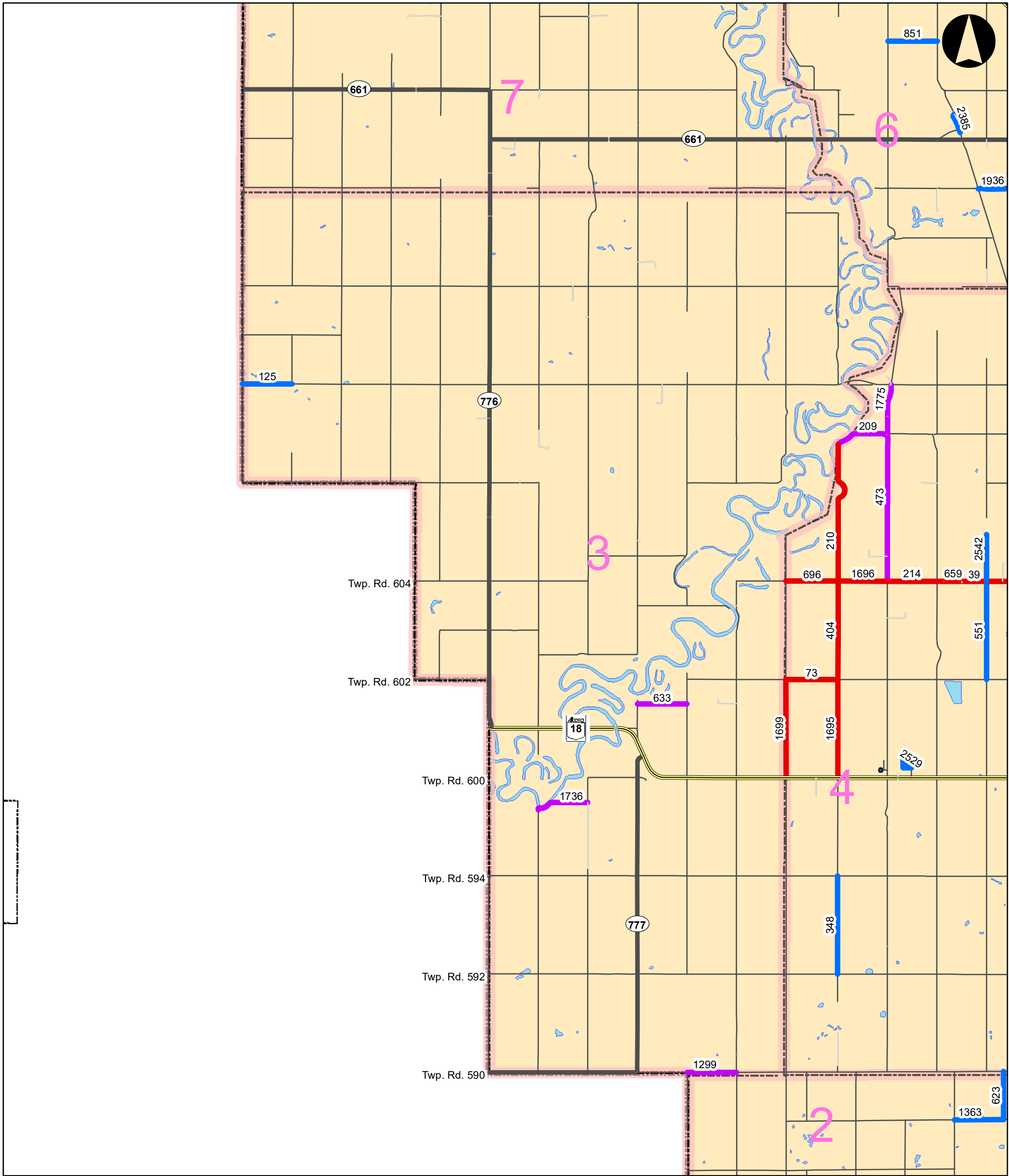


Project Location: 116239510
Westlock, AB
Prepared by JA on 2018-07-20

Client/Project: Westlock County

Figure No. 7.1.2

Title: Division 2: Road Construction

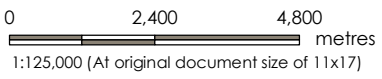


V:\1162\active\116239510\050_dwg_e\inc_dsign\01_arcview\MXD\Figure 7.1-3_westlock_road_study_181025.mxd Revise: 2018-10-25 By: jahn

Legend	
Year	— 2020 - 2024 — 2019 — 2025 - 2029 — Westlock Roads Divisions Waterbody

Notes

1. Coordinate System: NAD83 Alberta 3TM ref merid 114 W
2. Base features produced under license with BING
3. Service Layer Credits:

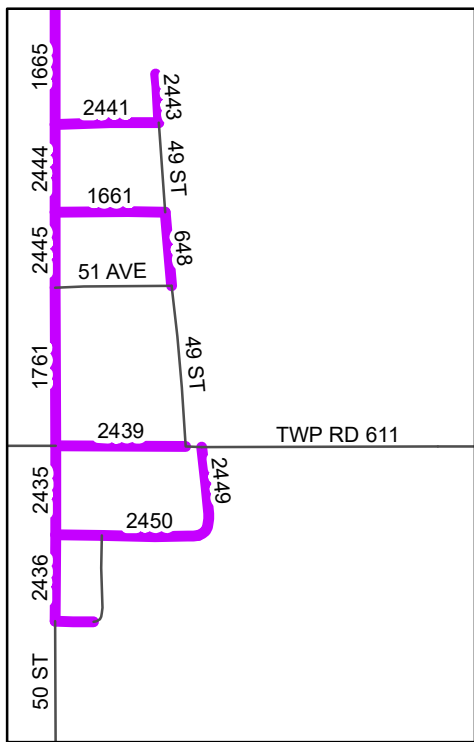
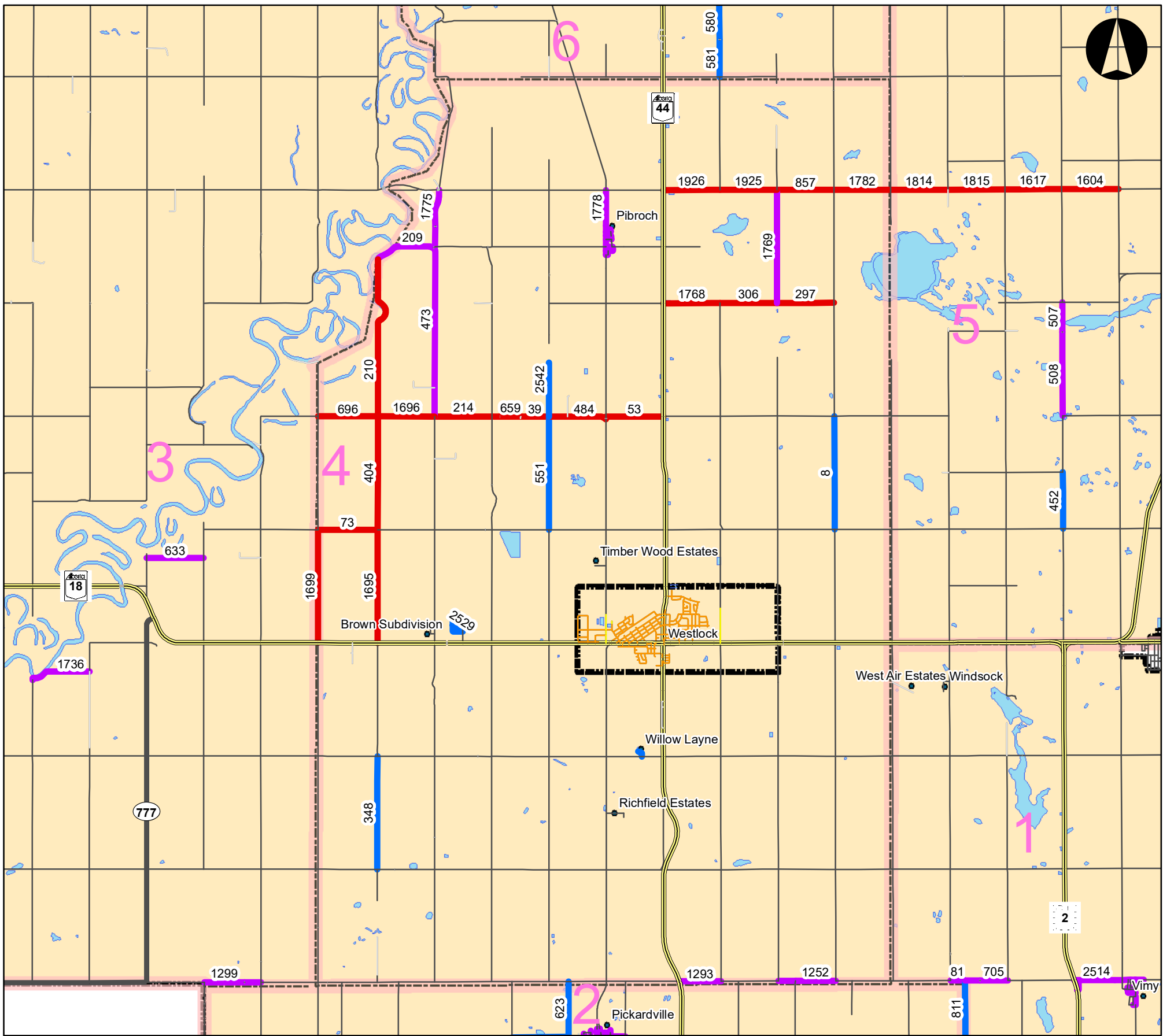


Project Location: 116239510
Westlock, AB Prepared by JA on 2018-07-20

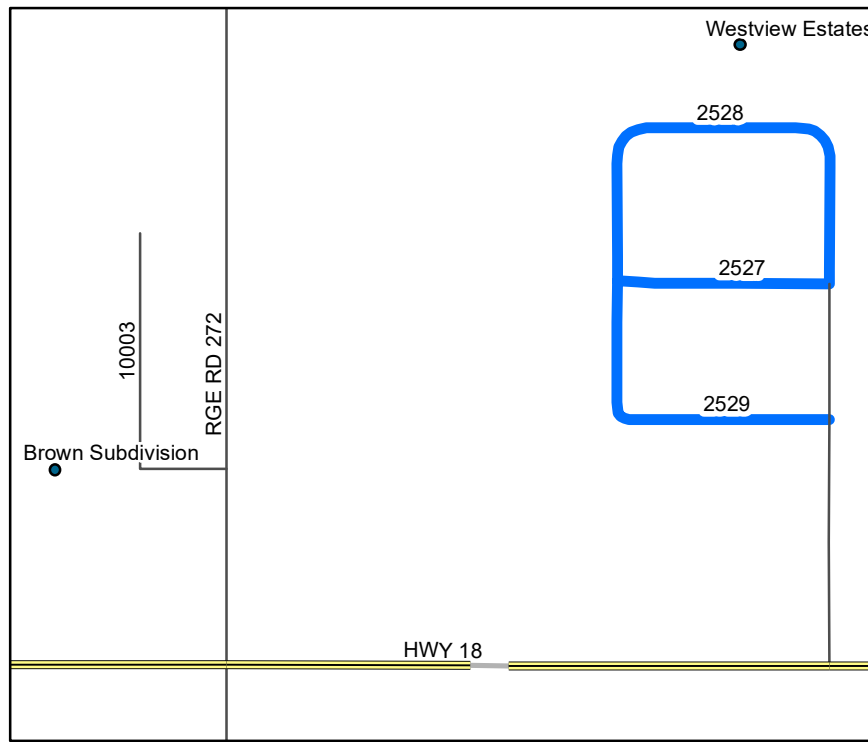
Client/Project: Westlock County

Figure No. **7.1.3**

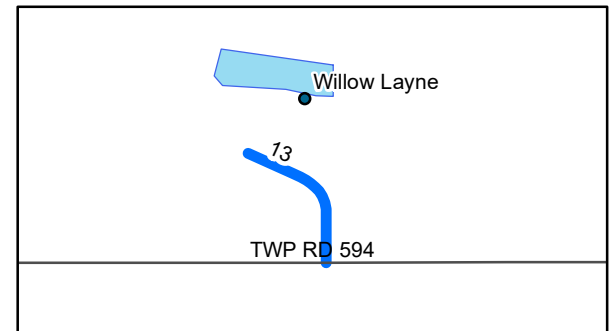
Title: **Division 3: Road Construction**



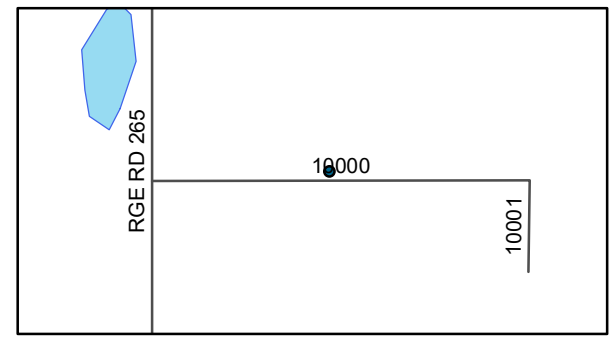
Pibroch



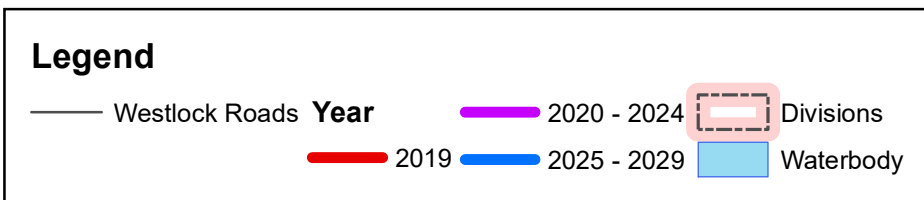
Brown Subdivision & Westview Estates



Willow Layne

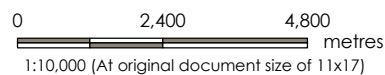


Richfield Estates



Notes

1. Coordinate System: NAD83 Alberta 3TM ref merid 114 W
2. Base features produced under license with BING
3. Service Layer Credits:

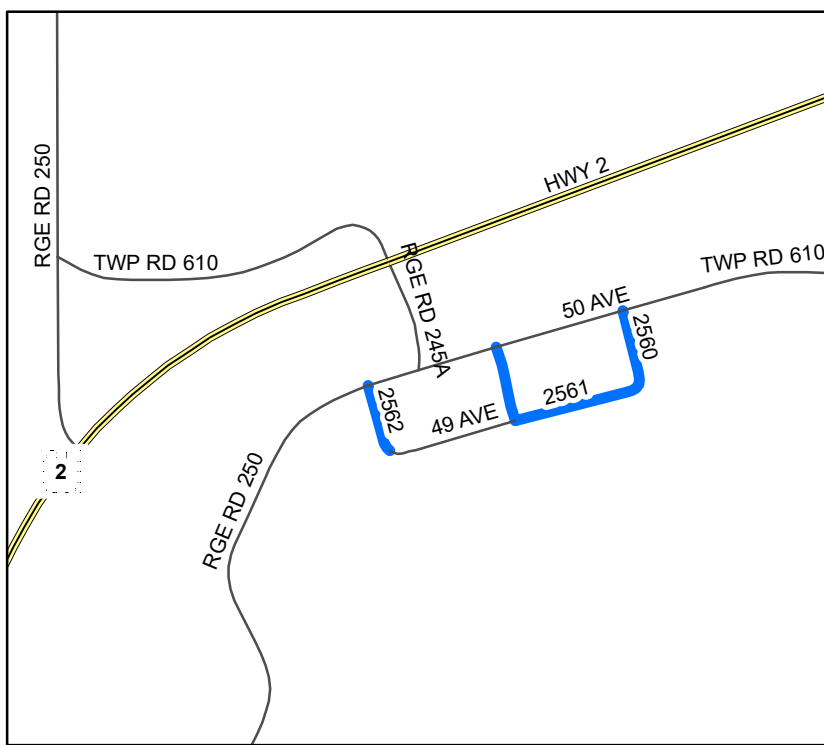
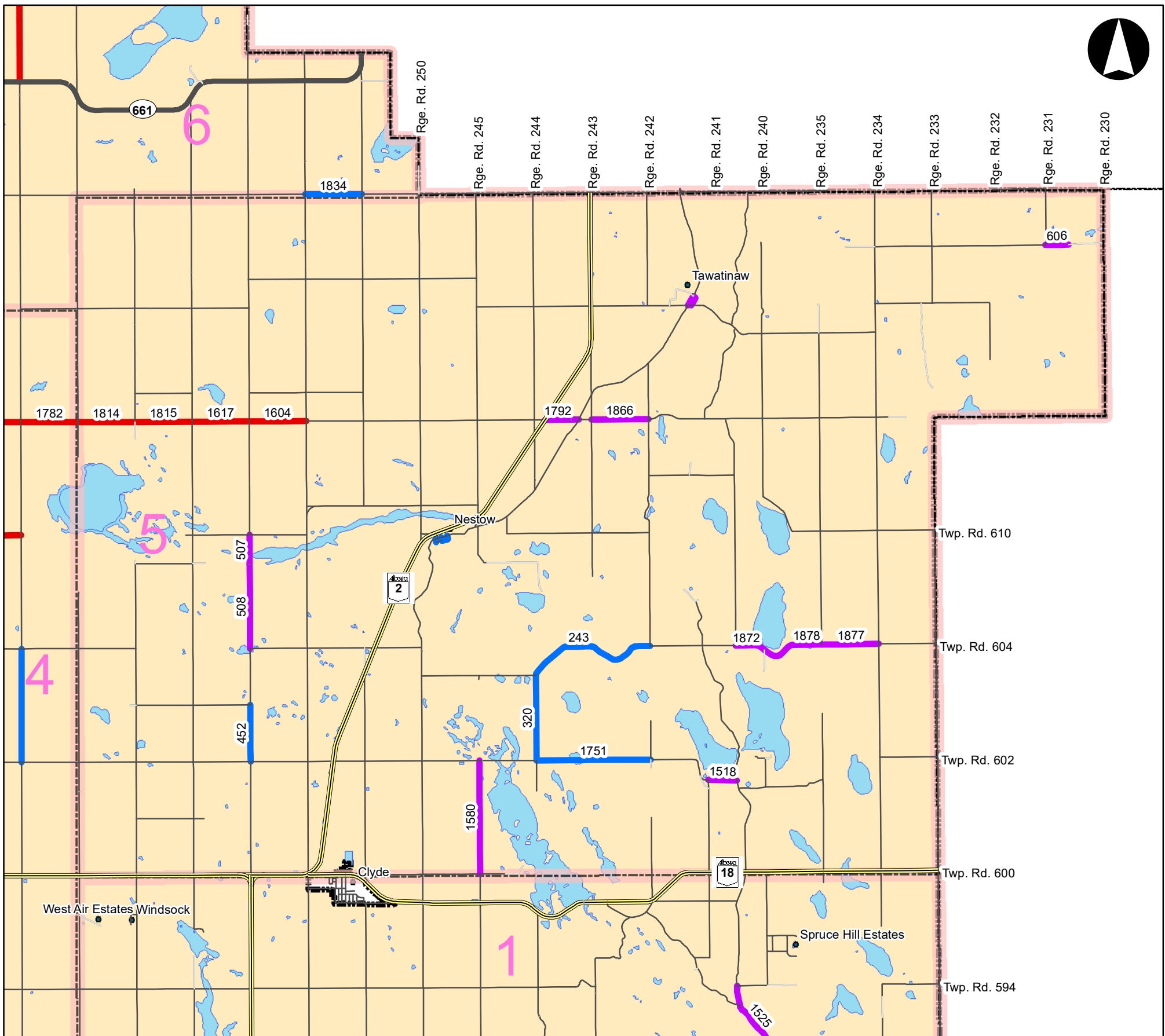


Project Location 116239510
Westlock, AB Prepared by JA on 2018-07-20

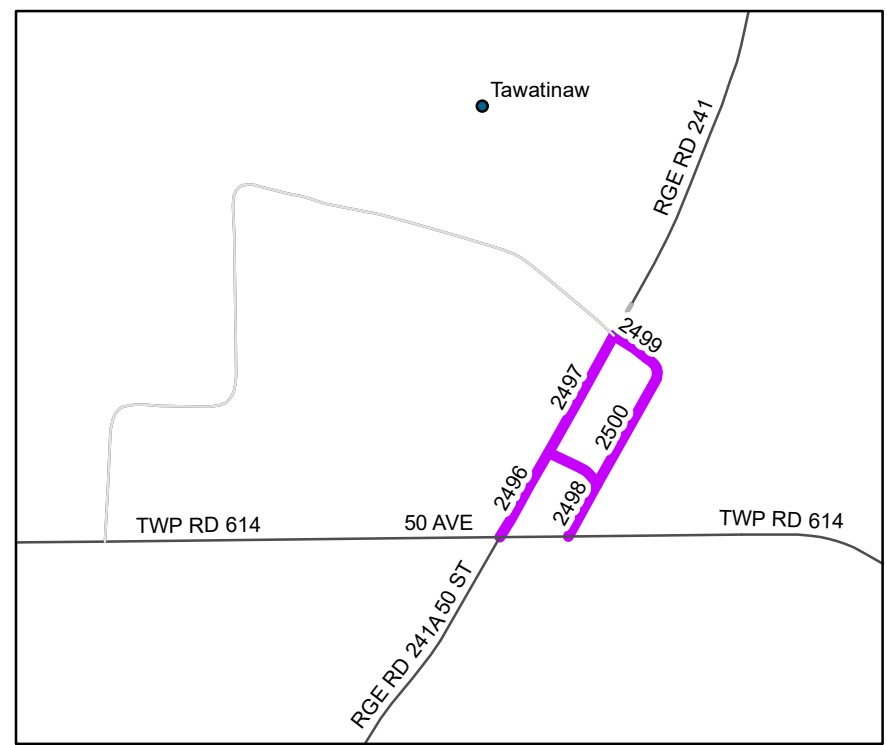
Client/Project
Westlock County

Figure No. 7.1.4

Title
Division 4: Road Construction



Nestow



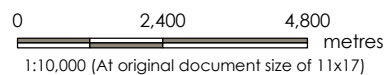
Tawatinaw

Legend

- Westlock Roads Year
- 2019
- 2020 - 2024
- 2025 - 2029
- ▭ Divisions
- ▭ Waterbody

Notes

1. Coordinate System: NAD83 Alberta 3TM ref merid 114 W
2. Base features produced under license with BING
3. Service Layer Credits:

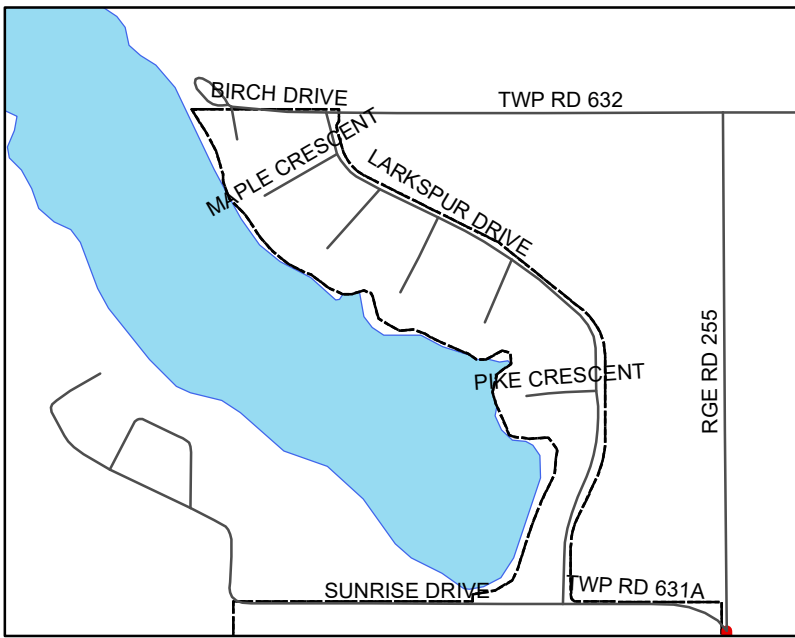
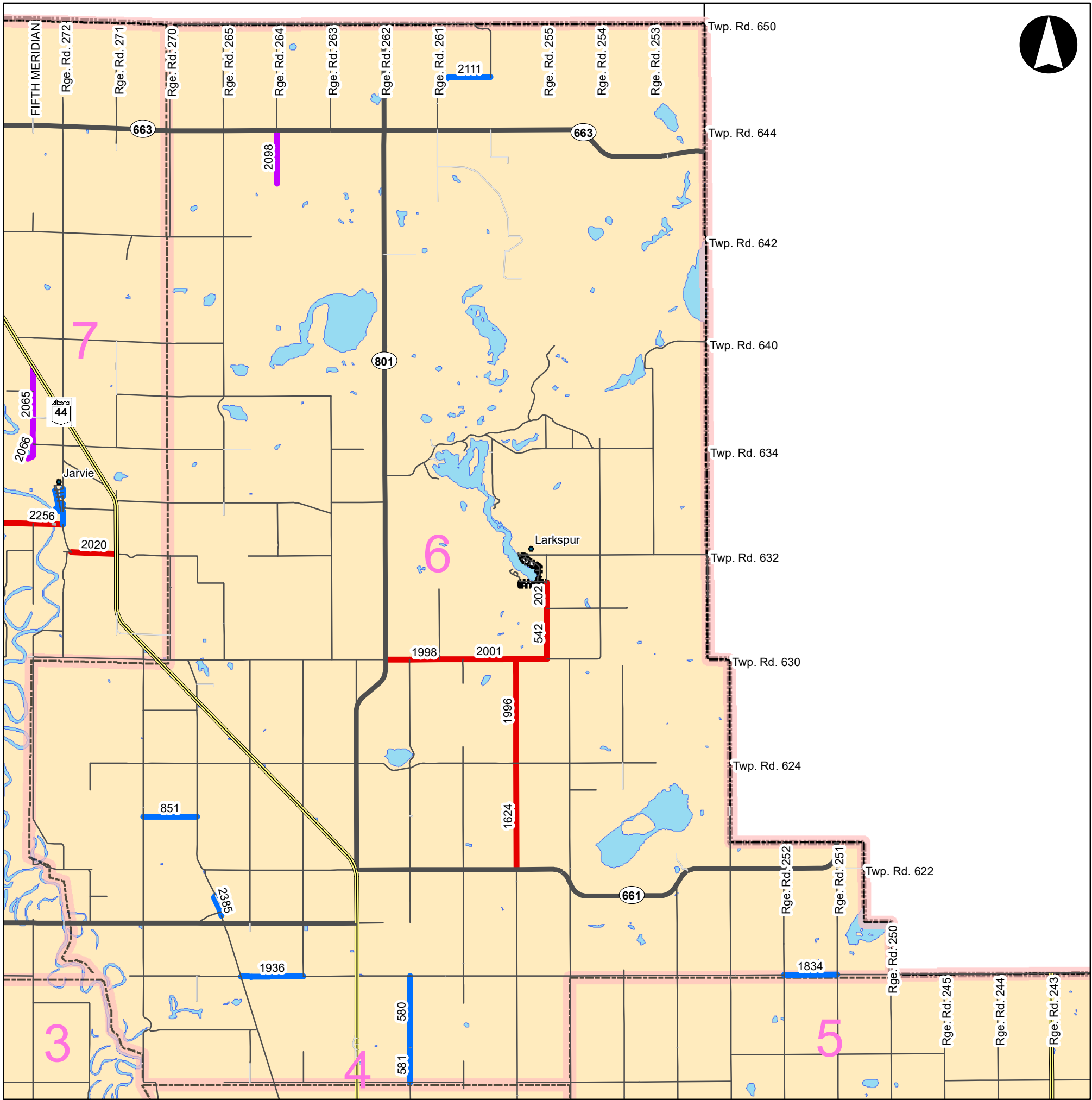


Project Location: 116239510
Westlock, AB
Prepared by JA on 2018-07-20

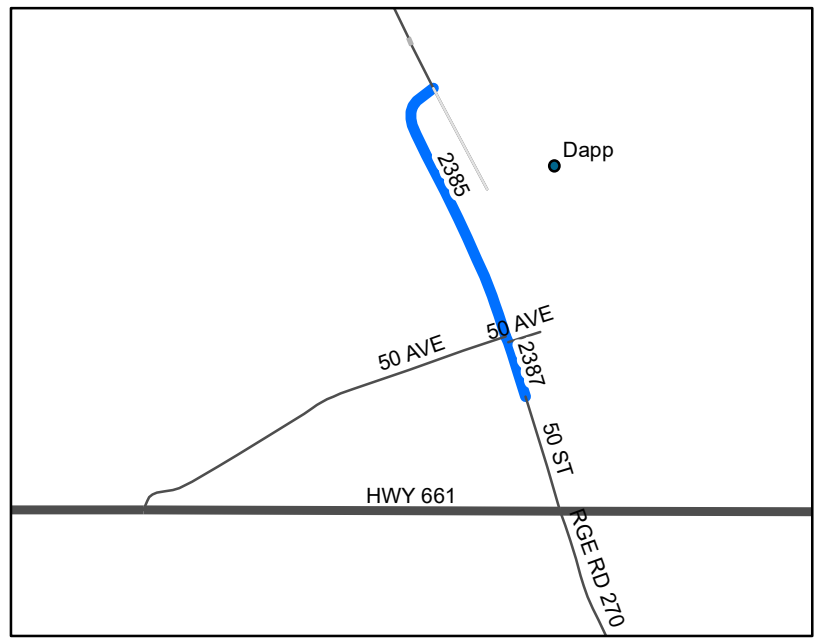
Client/Project: Westlock County

Figure No. **7.1.5**

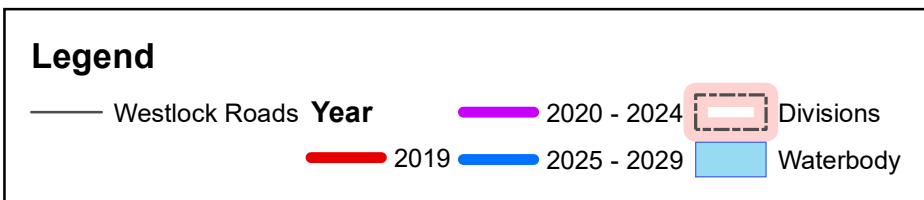
Title: **Division 5: Road Construction**



Larkspur

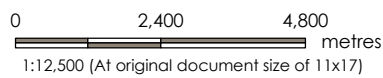


Dapp



Notes

- 1. Coordinate System: NAD83 Alberta 3TM ref merid 114 W
- 2. Base features produced under license with BING
- 3. Service Layer Credits:

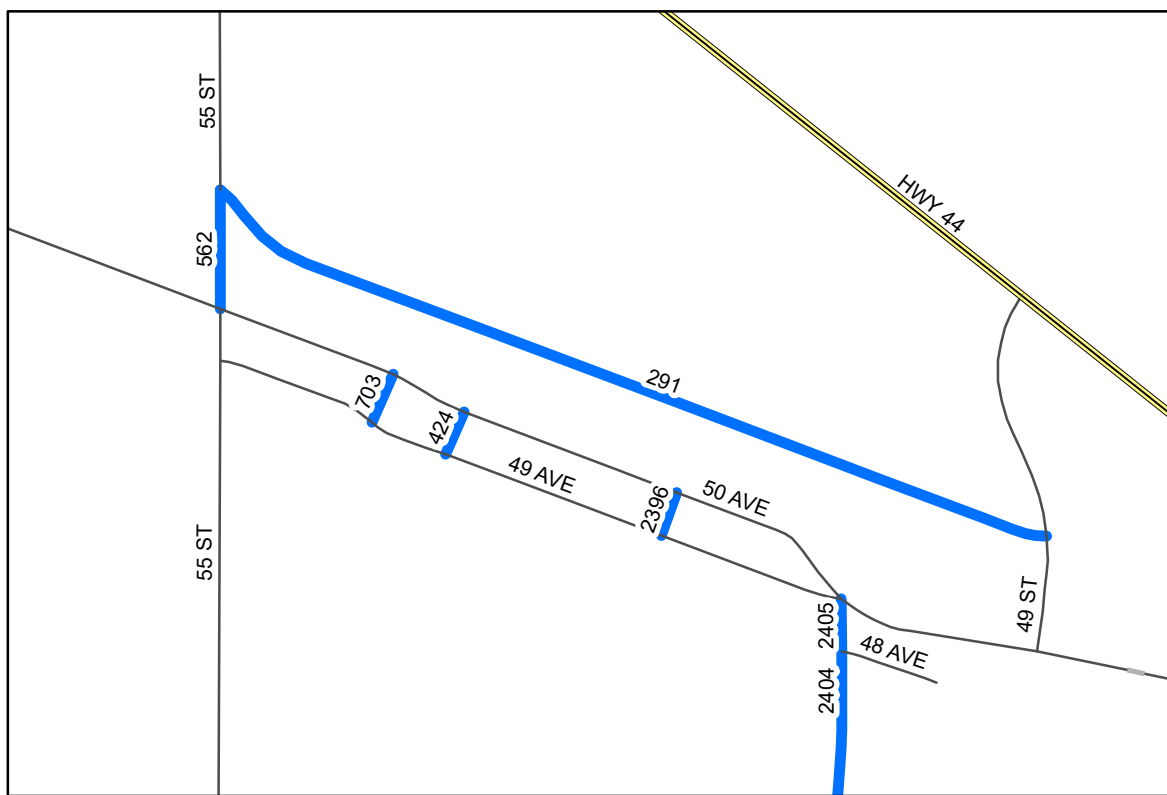
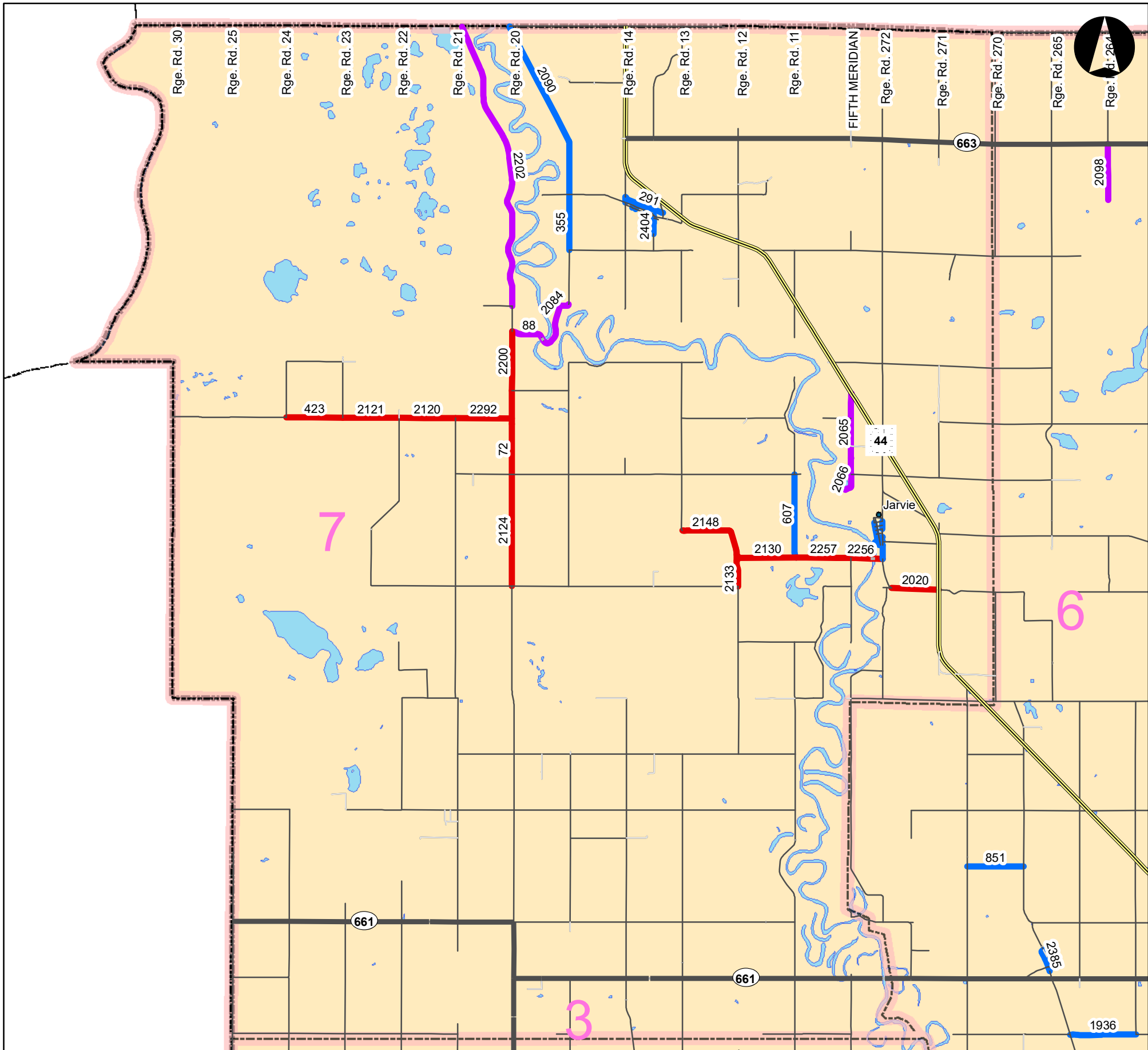


Project Location 116239510
Westlock, AB Prepared by JA on 2018-07-20

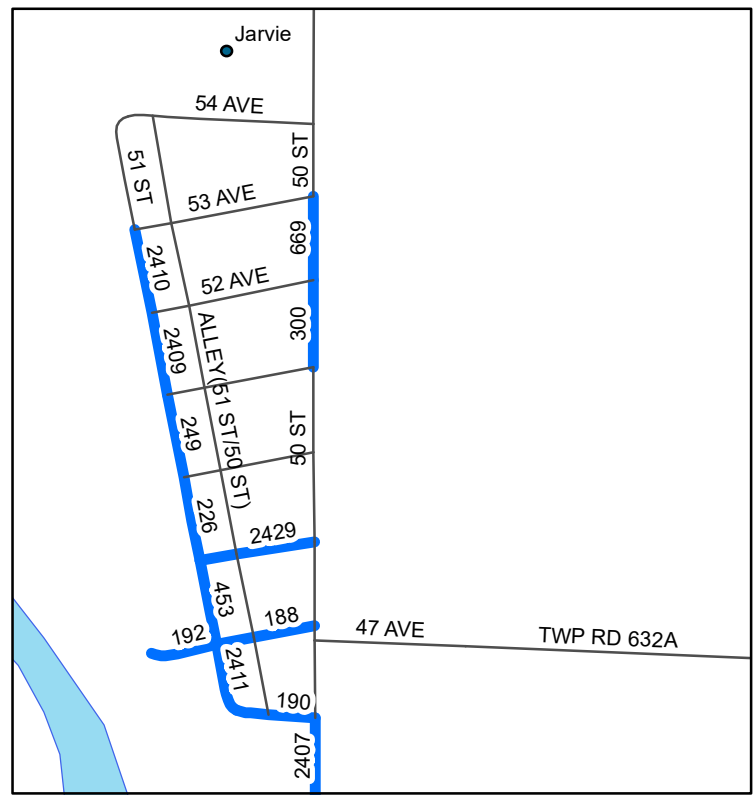
Client/Project
Westlock County

Figure No. **7.1.6**

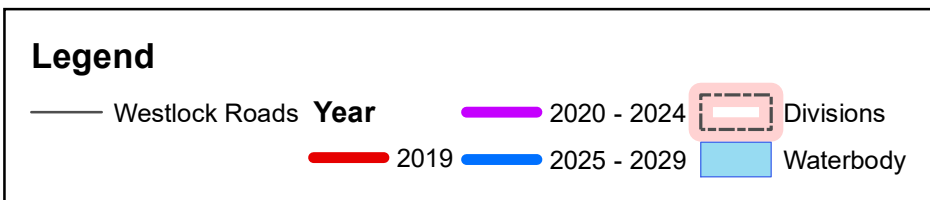
Title
Division 6: Road Construction



Fawcett

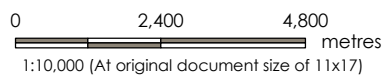


Jarvie



Notes

1. Coordinate System: NAD83 Alberta 3TM ref merid 114 W
2. Base features produced under license with BING
3. Service Layer Credits:



Project Location: 116239510
Westlock, AB Prepared by JA on 2018-07-20

Client/Project: Westlock County

Figure No. 7.1.7

Title: Division 7: Road Construction

WESTLOCK COUNTY 2018 RURAL ROAD STUDY

Road Construction Recommendations
August 29, 2018

